



# BRIZE NORTON NEIGHBOURHOOD PLAN

**APPENDIX 10**

*October 2018*

## TVERC BIODIVERSITY REPORT

*“our village  
our community  
our future”*

*Sharing environmental information in Berkshire and Oxfordshire*

# BIODIVERSITY REPORT

Site: Brize Norton Neighbourhood Plan area

TVERC Ref: TVERC/18/064

Prepared for: Brize Norton Neighbourhood Plan Steering Group

On: 11/05/2018

By: Thames Valley Environmental Records Centre  
01865 815 451  
datasearch@tverc.org  
www.tverc.org

**This report should not to be passed on to third parties or published without prior permission of TVERC.**

**Please be aware that printing maps from this report requires an appropriate OS licence.**



## TABLE OF CONTENTS

The following are included in this report:

### GENERAL INFORMATION:

- ☒ Terms & Conditions
- ☒ Species data statements

### PROTECTED & NOTABLE SPECIES INFORMATION:

- ☒ Table of legally protected and notable species within Site only search area
- ☒ Table of Invasive species records within Site only search area
- ☒ Species status key
- ☒ Data origin key

### DESIGNATED WILDLIFE SITE INFORMATION:

- ☒ A map of designated wildlife sites within Site only search area
- ☒ Descriptions/citations for designated wildlife sites
- ☒ Designated wildlife sites guidance

### HABITAT INFORMATION:

- ☒ A map of section 41 habitats of principal importance within Site only search area
- ☒ A list of habitats and total area within the search area
- ☒ Habitat metadata

## TERMS AND CONDITIONS

The copyright for this document and the information provided is retained by Thames Valley Environmental Records Centre. The copyright for some of the species data will be held by a recording group or individual recorder. Where this is the case, and the group or individual providing the data is known, the data origin will be given in the species table.

TVERC must be acknowledged if any part of this report or data derived from it is used in a report. The whole document may be used as an appendix within your report.

The data in this report can only be used for the project for which it was requested. It cannot be passed on to third parties without permission of TVERC (this excludes reports presented to clients and Local Authorities).

The data should be considered valid for a maximum 12 months from the date on the cover of this report. If the data is to be used after that time an update should be requested. The data must not be added to any permanent database system.

The absence of any species or habitat data for any site, area or location does not mean that any species or habitat is not present.

## MAPS

To reproduce the Ordnance Survey mapping you must hold a relevant licence for the use of Ordnance Survey mapping or it can be copied at a printers or copyshop that holds a licence to carry out search work (see the Ordnance Survey website).



## DATA STATEMENTS

### STATEMENT ON OXFORDSHIRE BAT GROUP DATA

TVERC has agreed an exchange of data with Oxfordshire Bat Group (OBG) which enables us to provide records belonging to them with the grid reference given to 1 km precision. Such records are indicated by the term "Confidential, refer to OBG for further details" in the location column and OBG in the data origin column of the species table. Enquirers are recommended to contact OBG for further information.

David Endacott  
27 Hedge Hill Road  
East Challow  
Wantage  
Oxon  
OX12 9SD

[davidendacott@hotmail.com](mailto:davidendacott@hotmail.com)

### STATEMENT ON BIRD RECORDS IN OXFORDSHIRE (DATA MARKED AS OOS" IN THE DATA ORIGIN COLUMN

The majority of bird records in Oxfordshire, except those in the north of the county, have been provided by the Oxford Ornithological Society. Such records have a value of OOS in the data origin column . Please note that:

- a. Not all species are subject to the same degree of recording; the absence of records of a species in a given geographical area does not necessarily indicate absence of that species.
- b. Not all parts of the county are subject to the same degree of recording; the absence of records for a given area does not necessarily indicate the absence of bird species.
- c. Records of species regarded as sensitive have been provided with reduced information about location. Any requests for more precise information about the location of such "confidential" sites should be addressed directly to OOS ([www.oos.org.uk](http://www.oos.org.uk)) You can use the following email contacts [chairman@oos.org.uk](mailto:chairman@oos.org.uk) (the chairman) and [ian@recorder.fsnet.co.uk](mailto:ian@recorder.fsnet.co.uk) (the county bird recorder).

### STATEMENT ON WILDLIFE TRUST WATER VOLE DATA

Since 2008 data has been collected as positive or negative sections of watercourses. Positive sections crossing into search areas are included within the data. These are shown with the central grid reference for the stretch of watercourse. This may fall outside the search area but the stretch will be at least partly within the search area. The location information shows the beginning and end points of the stretch of watercourse.

## USE OF NBN GATEWAY DATA

Commercial organisations and members of the public may refer to the National Biodiversity Network (NBN) Gateway for wildlife records and habitat and designated site information for their own private use.

The NBN Gateway's Terms and Conditions state "*You may not republish wholesale the material, data and/or information made available to you, or exploit it for commercial or academic research purposes without first obtaining written permission from the relevant data provider*". This means that environmental consultants cannot use NBN data in ecology reports for planning applications unless they have obtained written permission from all the data providers. If NBN Gateway data are also provided for this project please make sure that the NBN Gateway's terms and conditions are followed precisely.

The National Planning Policy Framework states that "planning policies and decisions should be based on up-to date information about the natural environment and other characteristics of the area". The NBN Gateway does not hold the most up-to-date, comprehensive or highest resolution information on protected and notable species, local sites or habitats in Berkshire and Oxfordshire.

TVERC have advised planning authorities in Berkshire and Oxfordshire that ecology reports using only NBN data should not usually be validated and the NBN has requested that suspected breaches of NBN terms and conditions are reported to the NBN Data Access Officer, who will take appropriate action. Further detail is available on our website: <http://www.tverc.org/cms/content/ecological-survey-reports-planning-applications>.

## STATEMENT ON GRID REFERENCES

The following types of grid references are provided:

- Six figure grid references. Many of these will be an assigned relatively central grid reference for a site though with small sites the assigned grid reference for a site could be close to the edge. The record may have come from anywhere within the site. Where additional location information is provided the reference may be more accurate or central to a subsite within the larger site. Where the location is not site based, the grid reference should be within 100 metres of the location.
- Four figure grid references. Generally these are 1km square records often with some location information to give an idea of which part of the 1km square the record was found. Sometime this information can be quite accurate. Where a large site is referred to the location should be in that part of the 1km square that is within the site. In some case these may be tetrad records with grid reference referring to a 2km x 2km square. This includes some confidential records from Oxford Ornithological Society. Other tetrad data is rarely included.
- Eight and ten figure grid references: These are generally accurately worked out to the location where the species was found. However for small and narrow sites eight figure grid references may be used as a central grid reference for a site.

- TVERC intends to start tagging data to qualify these grid references but at present only a limited amount of qualification is provided. 1km square records are tagged as 1km record and 2km square records are tagged as 2km record.

Taxon Name	Common Name	Abundance / Sex / Stage	Date	Grid Ref.	Grid Ref. Qualifier	Location	Type of Record	Data Origin	European Directives	UK Legislation	NERC s41	Other Designations
Amphibians												
Great Crested Newt	Triturus cristatus	33	01/05/2013-31/07/2013	SP302065		RAF Brize Norton Airfield, Oxfordshire	caught	EC	HabDir-A2np HabDir-A4	HabReg-Sch2 WACA-Sch5-s9.4b/s9.4c/s9.5a	NERC-S41	
Birds												
Grey Partridge	Perdix perdix	2	17/03/2003	SP3007	1 km record	Brize Norton	field record	OOS			NERC-S41	Bird-Red
Kestrel	Falco tinnunculus	1 Individual	31/03/2006	SP287070		Brize Norton: RAF Brize Norton	field record	OOS				Bird-Amber
Kestrel	Falco tinnunculus	1 Female	18/11/2000	SP2905	1 km record	Black Bourton: Water Works	field record	OOS				Bird-Amber
Hobby	Falco subbuteo	1	03/05/2003	SP20X	1 km record	Confidential, refer to OOS for further details	field record	OOS		WACA-Sch1-p1		
Hobby	Falco subbuteo	1	27/08/2004	SP20Y	1 km record	Confidential, refer to OOS for further details	field record	OOS		WACA-Sch1-p1		
Hobby	Falco subbuteo	1	26/07/2004	SP20Y	1 km record	Confidential, refer to OOS for further details	field record	OOS		WACA-Sch1-p1		
Hobby	Falco subbuteo	1	14/08/2004	SP20Y	1 km record	Confidential, refer to OOS for further details	field record	OOS		WACA-Sch1-p1		
Hobby	Falco subbuteo	1	06/09/1998	SP21V	1 km record	Confidential, refer to OOS for further details	field record	OOS		WACA-Sch1-p1		
Hobby	Falco subbuteo	1	04/09/1999	SP21V	1 km record	Confidential, refer to OOS for further details	field record	OOS		WACA-Sch1-p1		
Hobby	Falco subbuteo	1	27/05/2000	SP21V	1 km record	Confidential, refer to OOS for further details	field record	OOS		WACA-Sch1-p1		
Peregrine	Falco peregrinus	1	27/12/2000	SP20Y	1 km record	Confidential, refer to OOS for further details	field record	OOS	BirdsDir-A1	WACA-Sch1-p1		
Golden Plover	Pluvialis apricaria	c.50	16/03/1999	SP2810	1 km record	Asthall: Asthall Barrow	field record	OOS	BirdsDir-A1			
Golden Plover	Pluvialis apricaria	50	19/11/2002	SP282103		S. of A40	field record	OBRC	BirdsDir-A1			
Golden Plover	Pluvialis apricaria	60	28/11/2001	SP282103			field record	OBRC	BirdsDir-A1			
Golden Plover	Pluvialis apricaria	c.40	12/02/2003	SP282103		Astall: Astall roundabout	field record	OOS	BirdsDir-A1			
Golden Plover	Pluvialis apricaria	c.40	20/01/2003	SP282103		Astall: Astall Barrow	field record	OOS	BirdsDir-A1			
Golden Plover	Pluvialis apricaria	50 to 60	28/11/2001	SP282103			field record	OOS	BirdsDir-A1			
Golden Plover	Pluvialis apricaria	c.40	14/02/2003	SP282103		Astall: Astall roundabout	field record	OOS	BirdsDir-A1			
Golden Plover	Pluvialis apricaria	c.30	10/11/2000	SP285102		Asthall	field record	OOS	BirdsDir-A1			
Golden Plover	Pluvialis apricaria	30 Adults	10/11/2000	SP285102		S. of A40	field record	OBRC	BirdsDir-A1			
Golden Plover	Pluvialis apricaria	40 Adults	27/10/2004	SP293098			field record	OBRC	BirdsDir-A1			
Golden Plover	Pluvialis apricaria	90 Adults	12/11/2002	SP293099		Nr. Astall roundabout	field record	OBRC	BirdsDir-A1			
Golden Plover	Pluvialis apricaria	200	28/11/1998	SP3007	1 km record	Brize Norton	field record	OOS	BirdsDir-A1			
Golden Plover	Pluvialis apricaria	c.100	02/12/1998	SP3007	1 km record	Brize Norton	field record	OOS	BirdsDir-A1			
Golden Plover	Pluvialis apricaria	7	19/12/1999	SP3007	1 km record	Brize Norton	field record	OOS	BirdsDir-A1			
Golden Plover	Pluvialis apricaria	585	05/12/1998	SP3007	1 km record	Brize Norton	field record	OOS	BirdsDir-A1			
Golden Plover	Pluvialis apricaria	50	03/01/1998	SP3007	1 km record	Brize Norton	field record	OOS	BirdsDir-A1			
Golden Plover	Pluvialis apricaria	c.50	16/12/2001	SP3007	1 km record	Brize Norton	field record	OOS	BirdsDir-A1			
Golden Plover	Pluvialis apricaria	c.350	21/11/1998	SP3007	1 km record	Brize Norton	field record	OOS	BirdsDir-A1			
Grey Plover	Pluvialis squatarola	1	21/11/1998	SP3007	1 km record	Brize Norton	field record	OOS				Bird-Amber
Lapwing	Vanellus vanellus	6	07/05/2001	SP2806	1 km record	Carterton	field record	OOS			NERC-S41	Bird-Red
Lapwing	Vanellus vanellus	3	10/06/2000	SP2806	1 km record	Carterton	field record	OOS			NERC-S41	Bird-Red
Lapwing	Vanellus vanellus	c.50	10/08/1999	SP2810	1 km record	Asthall	field record	OOS			NERC-S41	Bird-Red
Lapwing	Vanellus vanellus	3 Juveniles	21/05/1998	SP2910	1 km record	Worsham	field record	OOS			NERC-S41	Bird-Red
Lapwing	Vanellus vanellus	100	05/12/1998	SP3007	1 km record	Brize Norton	field record	OOS			NERC-S41	Bird-Red
Lapwing	Vanellus vanellus	50	21/11/1998	SP3007	1 km record	Brize Norton	field record	OOS			NERC-S41	Bird-Red
Snipe	Gallinago gallinago	1	25/05/1998	SP2910	1 km record	Worsham	field record	OOS				Bird-Amber
Dunlin	Calidris alpina	1	19/12/1999	SP3007	1 km record	Brize Norton	field record	OOS				Bird-Amber
Green Sandpiper	Tringa ochropus	1	07/03/2004	SP2910	1 km record	Carterton: Sewage Works	field record	OOS		WACA-Sch1-p1		Bird-Amber
Turtle Dove	Streptopelia turtur	1 Individual	11/06/2006	SP2806	1 km record	Carterton	field record	OOS			NERC-S41	Bird-Red
Barn Owl	Tyto alba	1	04/12/2002	SP20Y	1 km record	Confidential, refer to OOS for further details	field record	OOS		WACA-Sch1-p1		
Barn Owl	Tyto alba	1	30/07/2003	SP20Y	1 km record	Confidential, refer to OOS for further details	field record	OOS		WACA-Sch1-p1		
Barn Owl	Tyto alba	1	21/05/1998	SP21V	1 km record	Confidential, refer to OOS for further details	field record	OOS		WACA-Sch1-p1		

Taxon Name	Common Name	Abundance / Sex / Stage	Date	Grid Ref.	Grid Ref. Qualifier	Location	Type of Record	Data Origin	European Directives	UK Legislation	NERC s41	Other Designations
Barn Owl	Tyto alba	1	14/03/1998	SP21V	1 km record	Confidential, refer to OOS for further details	field record	OOS		WACA-Sch1-p1		
Barn Owl	Tyto alba		09/12/2010	SP291098			field record	LN		WACA-Sch1-p1		
Barn Owl	Tyto alba	1	07/04/2000	SP30D	1 km record	Confidential, refer to OOS for further details	field record	OOS		WACA-Sch1-p1		
Barn Owl	Tyto alba	1	21/01/2004	SP30D	1 km record	Confidential, refer to OOS for further details	field record	OOS		WACA-Sch1-p1		
Barn Owl	Tyto alba	1	24/04/2004	SP30D	1 km record	Confidential, refer to OOS for further details	field record	OOS		WACA-Sch1-p1		
Swift	Apus apus	1 Individual	01/05/2006	SP2806	1 km record	Carterton	field record	OOS				Bird-Amber
Swift	Apus apus	6 Adults	01/07/2013	SP29980815		Minster Road, Brize Norton	Flying	RSPB				Bird-Amber
Swift	Apus apus	6 Nests	05/05/2014	SP3001007801		The Priory, Manor Farm, Manor Road, Brize Norton	field record	RSPB				Bird-Amber
Swift	Apus apus	9 Adults	05/05/2014	SP3001007801		The Priory, Manor Farm, Manor Road, Brize Norton	Flying	RSPB				Bird-Amber
Swift	Apus apus	6 Adults	19/06/2012	SP30020761		Manor Road, Brize Norton	Flying	RSPB				Bird-Amber
Swift	Apus apus	1 Individual	12/08/2006	SP3007	1 km record	Brize Norton	field record	OOS				Bird-Amber
Swift	Apus apus	1	06/08/1999	SP3007	1 km record	Brize Norton	field record	OOS				Bird-Amber
Swift	Apus apus	15 Adults	16/06/2012	SP30100745		Squires Close, Brize Norton	Flying	RSPB				Bird-Amber
Kingfisher	Alcedo atthis	1	02/07/2000	SP21V	1 km record	Confidential, refer to OOS for further details	field record	OOS	BirdsDir-A1	WACA-Sch1-p1		Bird-Amber
Lesser Spotted Woodpecker	Dendrocopos minor		1977 - 1986	SP317076		Hucks Copse	field record	BBOWT			NERC-S41	Bird-Red
Willow Warbler	Phylloscopus trochilus		01/05/1986	SP310063		Dismantled Railway West	field record	BBOWT				Bird-Amber
Skylark	Alauda arvensis	6 Individuals	11/06/2006	SP2806	1 km record	Carterton	field record	OOS			NERC-S41	Bird-Red
Skylark	Alauda arvensis	8 Individuals	01/05/2006	SP2806	1 km record	Carterton	field record	OOS			NERC-S41	Bird-Red
Skylark	Alauda arvensis	6 Pairs	09/05/2004	SP2806	1 km record	Carterton	field record	OOS			NERC-S41	Bird-Red
Skylark	Alauda arvensis		01/07/1985	SP298070		Brize Norton reed bed	field record	BBOWT			NERC-S41	Bird-Red
Skylark	Alauda arvensis	12 Individuals	22/10/2006	SP3007	1 km record	Brize Norton	field record	OOS			NERC-S41	Bird-Red
Meadow Pipit	Anthus pratensis	2	02/12/2000	SP2905	1 km record	Black Bourton	field record	OOS				Bird-Amber
Meadow Pipit	Anthus pratensis	20 Individuals	22/10/2006	SP3007	1 km record	Brize Norton	field record	OOS				Bird-Amber
Yellow Wagtail	Motacilla flava subsp. flavissima	1 Individual	01/05/2006	SP2806	1 km record	Carterton	field record	OOS			NERC-S41	Bird-Red
Grey Wagtail	Motacilla cinerea	2 Individuals	02/12/2006	SP288065		Brize Norton: RAF Brize Norton	field record	OOS				Bird-Red
Grey Wagtail	Motacilla cinerea	3	02/12/2000	SP2905	1 km record	Black Bourton	field record	OOS				Bird-Red
Grey Wagtail	Motacilla cinerea	2	26/03/1999	SP2910	1 km record	Worsham	field record	OOS				Bird-Red
Grey Wagtail	Motacilla cinerea	1	14/03/1999	SP2910	1 km record	Worsham	field record	OOS				Bird-Red
Grey Wagtail	Motacilla cinerea	1	28/05/2000	SP2910	1 km record	Worsham	field record	OOS				Bird-Red
Black Redstart	Phoenicurus ochruros	1 Female	16/11/2000	SP20X	1 km record	Confidential, refer to OOS for further details	field record	OOS		WACA-Sch1-p1		Bird-Red
Black Redstart	Phoenicurus ochruros	1	19/11/2000	SP20X	1 km record	Confidential, refer to OOS for further details	field record	OOS		WACA-Sch1-p1		Bird-Red
Black Redstart	Phoenicurus ochruros	1 Male	16/01/2003	SP30D	1 km record	Confidential, refer to OOS for further details	field record	OOS		WACA-Sch1-p1		Bird-Red
Black Redstart	Phoenicurus ochruros	1 Male	25/02/2003	SP30D	1 km record	Confidential, refer to OOS for further details	field record	OOS		WACA-Sch1-p1		Bird-Red
Fieldfare	Turdus pilaris	2	23/03/2003	SP287070		Brize Norton	field record	OOS		WACA-Sch1-p1		Bird-Red
Fieldfare	Turdus pilaris	2	14/03/1999	SP2910	1 km record	Worsham	field record	OOS		WACA-Sch1-p1		Bird-Red
Fieldfare	Turdus pilaris	10	20/03/1999	SP3007	1 km record	Brize Norton	field record	OOS		WACA-Sch1-p1		Bird-Red
Song Thrush	Turdus philomelos	10	10/06/2000	SP2806	1 km record	Carterton	field record	OOS			NERC-S41	Bird-Red
Redwing	Turdus iliacus	3	20/03/2003	SP287070		Brize Norton	field record	OOS		WACA-Sch1-p1		Bird-Red
Redwing	Turdus iliacus	1	14/03/1999	SP2910	1 km record	Worsham	field record	OOS		WACA-Sch1-p1		Bird-Red
Spotted Flycatcher	Muscicapa striata	1	02/07/2000	SP2910	1 km record	Worsham	field record	OOS			NERC-S41	Bird-Red
Tree Sparrow	Passer montanus	1	10/06/2000	SP2806	1 km record	Carterton	field record	OOS			NERC-S41	Bird-Red
Linnet	Linaria cannabina	1	07/03/2004	SP2910	1 km record	Worsham	field record	OOS			NERC-S41	Bird-Red
Yellowhammer	Emberiza citrinella	3	01/06/1999	SP2806	1 km record	Carterton	field record	OOS			NERC-S41	Bird-Red
Yellowhammer	Emberiza citrinella	4 Individuals	01/05/2006	SP2806	1 km record	Carterton	field record	OOS			NERC-S41	Bird-Red
Yellowhammer	Emberiza citrinella	3 Individuals	11/06/2006	SP2806	1 km record	Carterton	field record	OOS			NERC-S41	Bird-Red
Yellowhammer	Emberiza citrinella	3 Pairs	09/05/2004	SP2806	1 km record	Carterton	field record	OOS			NERC-S41	Bird-Red

Taxon Name	Common Name	Abundance / Sex / Stage	Date	Grid Ref.	Grid Ref. Qualifier	Location	Type of Record	Data Origin	European Directives	UK Legislation	NERC s41	Other Designations
<i>Yellowhammer</i>	Emberiza citrinella	2 Individuals	22/10/2006	SP3007	1 km record	Brize Norton	field record	OOS			NERC-S41	Bird-Red
<i>Reed Bunting</i>	Emberiza schoeniclus		01/07/1985	SP298070		Brize Norton reed bed	field record	BBOWT			NERC-S41	Bird-Amber
<i>Reed Bunting</i>	Emberiza schoeniclus	4	17/03/2001	SP3007	1 km record	Brize Norton	field record	OOS			NERC-S41	Bird-Amber
<i>Corn Bunting</i>	Emberiza calandra	2	03/05/1999	SP2806	1 km record	Carterton	field record	OOS			NERC-S41	Bird-Red
<i>Corn Bunting</i>	Emberiza calandra	2 Males	30/04/2001	SP3007	1 km record	Brize Norton	field record	OOS			NERC-S41	Bird-Red
Higher Plants - Flowering Plants												
<i>Bluebell</i>	Hyacinthoides non-scripta	D (DAFOR)	1977 - 1987	SP31450750		Ten Acre Copse	field record	BBOWT		WACA-Sch8		
<i>Bluebell</i>	Hyacinthoides non-scripta	A (DAFOR)	14/05/1986	SP315084		Rabbits Piece Copse (Brize Norton)	field record	BBOWT		WACA-Sch8		
<i>Bluebell</i>	Hyacinthoides non-scripta		21/04/1994	SP316077		Lew Green Lane	field record	OBRC		WACA-Sch8		
<i>Bluebell</i>	Hyacinthoides non-scripta	D (DAFOR)	1977 - 1986	SP317076		Hucks Copse	field record	BBOWT		WACA-Sch8		
<i>Bluebell</i>	Hyacinthoides non-scripta	LA (DAFOR)	11/06/2014	SP317076		Hucks Copse		OLWS		WACA-Sch8		
<i>Bluebell</i>	Hyacinthoides non-scripta		12/06/2002	SP317076		Hucks Copse		OLWS		WACA-Sch8		
<i>Bluebell</i>	Hyacinthoides non-scripta		21/04/1994	SP317076		Hucks Copse	field record	OBRC		WACA-Sch8		
<i>Bluebell</i>	Hyacinthoides non-scripta	LA (DAFOR)	1977 - 1987	SP317079		Roundcopse South	field record	BBOWT		WACA-Sch8		
<i>Bluebell</i>	Hyacinthoides non-scripta	D (DAFOR)	1977 - 1986	SP317080		Round Copse	field record	BBOWT		WACA-Sch8		
<i>Bluebell</i>	Hyacinthoides non-scripta	LA (DAFOR)	31/03/1987	SP320075		Lew Green Lane	field record	BBOWT		WACA-Sch8		
<i>Corn Mint</i>	Mentha arvensis		01/06/2009	SP20Y	2 km record	Witney By Pass tetrad record	field record	LN				RL-Eng-post2001-NT
<i>Ragged-Robin</i>	Silene flos-cuculi		12/06/2002	SP317076		Hucks Copse		OLWS				RL-Eng-post2001-NT
<i>Ragged-Robin</i>	Silene flos-cuculi		1977 - 1986	SP317076		Hucks Copse	field record	BBOWT				RL-Eng-post2001-NT
<i>Wild Pansy</i>	Viola tricolor		14/05/1986	SP315084		Rabbits Piece Copse (Brize Norton)	field record	BBOWT				RL-Eng-post2001-NT RL-GB-post2001-NT
<i>Field Scabious</i>	Knautia arvensis		01/06/2009	SP20Y	2 km record	Witney By Pass tetrad record	field record	LN				RL-Eng-post2001-NT
Invertebrates - Butterflies												
<i>Small Heath</i>	Coenonympha pamphilus	10 to 29	09/06/1991	SP3005	1 km record	Brize Norton	field record	BC			NERC-S41	RL-GB-post2001-NT
<i>Small Heath</i>	Coenonympha pamphilus	2 to 9	09/06/1991	SP3006	1 km record	Brize Norton	field record	BC			NERC-S41	RL-GB-post2001-NT
<i>Small Heath</i>	Coenonympha pamphilus	2 to 9	09/06/1991	SP3207	1 km record	Dismantled Railway West	field record	BC			NERC-S41	RL-GB-post2001-NT
Invertebrates - Moths												
<i>Shaded Broad-bar</i>	Scotopteryx chenopodiata		08/07/1992	SP307095		Witney By Pass	field record	OBRC			NERC-S41	
Mammals - Terrestrial (bats)												
<i>Whiskered Bat</i>	Myotis mystacinus	1 Adult Male	13/09/2013	SP2907		Confidential, refer to OBG for further details	Injured Bat Record	OBG	HabDir-A4	HabReg-Sch2 WACA-Sch5-s9.4b/s9.4c/s9.5a/s9.5b		
<i>Whiskered Bat</i>	Myotis mystacinus	100 Droppings	08/08/2016	SP3014207132		Yew Tree Cottage, Brize Norton	dung/droppings/frass/pellet, etc.	EC	HabDir-A4	HabReg-Sch2 WACA-Sch5-s9.4b/s9.4c/s9.5a/s9.5b		
<i>Noctule Bat</i>	Nyctalus noctula		08/08/2016	SP30150713		Yew Tree Cottage, Brize Norton	aural bat detector	EC	HabDir-A4	HabReg-Sch2 WACA-Sch5-s9.4b/s9.4c/s9.5a/s9.5b	NERC-S41	
<i>Noctule Bat</i>	Nyctalus noctula		23/08/2016	SP30150713		Yew Tree Cottage, Brize Norton	aural bat detector	EC	HabDir-A4	HabReg-Sch2 WACA-Sch5-s9.4b/s9.4c/s9.5a/s9.5b	NERC-S41	
<i>Pipistrelle Bat species</i>	Pipistrellus	1 Adult Male	29/03/1994	SP2907		Confidential, refer to OBG for further details	Injured Bat Record	OBG	HabDir-A4	HabReg-Sch2 WACA-Sch5-s9.4b/s9.4c/s9.5a/s9.5b	NERC-S41	

Taxon Name	Common Name	Abundance / Sex / Stage	Date	Grid Ref.	Grid Ref. Qualifier	Location	Type of Record	Data Origin	European Directives	UK Legislation	NERC s41	Other Designations
<i>Pipistrelle Bat species</i>	Pipistrellus	1 Adult Male	29/03/1994	SP2907		Confidential, refer to OBG for further details	Injured Bat Record	OBG	HabDir-A4	HabReg-Sch2 WACA-Sch5-s9.4b/s9.4c/s9.5a/s9.5b	NERC-S41	
<i>Common Pipistrelle</i>	Pipistrellus pipistrellus		08/08/2016	SP30150713		Yew Tree Cottage, Brize Norton	aural bat detector	EC	HabDir-A4	HabReg-Sch2 WACA-Sch5-s9.4b/s9.4c/s9.5a/s9.5b		
<i>Common Pipistrelle</i>	Pipistrellus pipistrellus		23/08/2016	SP30150713		Yew Tree Cottage, Brize Norton	aural bat detector	EC	HabDir-A4	HabReg-Sch2 WACA-Sch5-s9.4b/s9.4c/s9.5a/s9.5b		
<i>Soprano Pipistrelle</i>	Pipistrellus pygmaeus		08/08/2016	SP30140712		Yew Tree Cottage, Brize Norton	aural bat detector	EC	HabDir-A4	HabReg-Sch2 WACA-Sch5-s9.4b/s9.4c/s9.5a/s9.5b	NERC-S41	
<i>Brown Long-eared Bat</i>	Plecotus auritus		23/08/2016	SP30140712		Yew Tree Cottage, Brize Norton	aural bat detector	EC	HabDir-A4	HabReg-Sch2 WACA-Sch5-s9.4b/s9.4c/s9.5a/s9.5b	NERC-S41	
<i>Brown Long-eared Bat</i>	Plecotus auritus		08/08/2016	SP30140712		Yew Tree Cottage, Brize Norton	aural bat detector	EC	HabDir-A4	HabReg-Sch2 WACA-Sch5-s9.4b/s9.4c/s9.5a/s9.5b	NERC-S41	
<i>Brown Long-eared Bat</i>	Plecotus auritus		23/08/2016	SP3014407130		Yew Tree Cottage, Brize Norton	Entering Roost	EC	HabDir-A4	HabReg-Sch2 WACA-Sch5-s9.4b/s9.4c/s9.5a/s9.5b	NERC-S41	
<b>Mammals - Terrestrial (excl. bats)</b>												
<i>West European Hedgehog</i>	Erinaceus europaeus	1 Dead	2013	SP2808	1 km record	Confidential	hibernating	PTES			NERC-S41	
<i>West European Hedgehog</i>	Erinaceus europaeus	1 alive	2014	SP288077		Confidential	hibernating	PTES			NERC-S41	
<i>West European Hedgehog</i>	Erinaceus europaeus	1 alive	2014	SP288077		Confidential	hibernating	PTES			NERC-S41	
<i>West European Hedgehog</i>	Erinaceus europaeus		09/06/2013	SP2905008250		Carterton	field record	MS			NERC-S41	
<i>European Otter</i>	Lutra lutra	1 Individual	19/12/2014	SP30240962		A40	field record	LN	HabDir-A2np HabDir-A4	HabReg-Sch2 WACA-Sch5-s9.4b/s9.4c/s9.5a	NERC-S41	RL-Global-post2001-NT
<i>European Otter</i>	Lutra lutra		26/11/2007	SP303065		Brize Norton (adj. airfield)	Dead (reason unknown)	EA	HabDir-A2np HabDir-A4	HabReg-Sch2 WACA-Sch5-s9.4b/s9.4c/s9.5a	NERC-S41	RL-Global-post2001-NT
<i>Eurasian Badger</i>	Meles meles		15/08/2004	SP283103		A40	dead on road	OBRC		Badgers-1992		
<i>Eurasian Badger</i>	Meles meles		06/05/2003	SP291100		A40	dead on road	OBRC		Badgers-1992		
<i>Eurasian Badger</i>	Meles meles		13/05/2005	SP291100		A40	dead on road	OBRC		Badgers-1992		
<i>Eurasian Badger</i>	Meles meles		14/04/2012	SP291100		A40	dead on road	LN		Badgers-1992		
<i>Eurasian Badger</i>	Meles meles		02/10/2014	SP307095		A40	dead on road	LN		Badgers-1992		
<i>Eurasian Badger</i>	Meles meles		02/10/2014	SP307095		A40	dead on road	LN		Badgers-1992		
<i>Eurasian Badger</i>	Meles meles		17/06/1999	SP308094		Witney By Pass	dead on road	OBRC		Badgers-1992		
<i>Eurasian Badger</i>	Meles meles		24/09/2002	SP312094		Witney By Pass	dead on road	OBRC		Badgers-1992		
<i>Eurasian Badger</i>	Meles meles		11/06/2014	SP317076		Hucks Copse		OLWS		Badgers-1992		
<i>Polecat</i>	Mustela putorius	1	03/02/1999	SP298097		A40	dead on road	OBRC	HabDir-A5	HabReg-Sch4	NERC-S41	
<i>Polecat</i>	Mustela putorius		07/03/2000	SP299097		A40	dead on road	OBRC	HabDir-A5	HabReg-Sch4	NERC-S41	
<i>Polecat</i>	Mustela putorius		07/03/2000	SP299097		Witney By Pass	dead on road	OBRC	HabDir-A5	HabReg-Sch4	NERC-S41	
<i>Polecat</i>	Mustela putorius		Feb-02	SP304063			dead on road	OBRC	HabDir-A5	HabReg-Sch4	NERC-S41	
<i>Polecat</i>	Mustela putorius		30/09/2002	SP312094		A40	dead on road	OBRC	HabDir-A5	HabReg-Sch4	NERC-S41	
<i>Harvest Mouse</i>	Micromys minutus	Nests	01/01/2009-19/03/2009	SP3131508503		Oxfordshire	nest	WILDCRU			NERC-S41	
<i>Harvest Mouse</i>	Micromys minutus	Nests	01/01/2009-19/03/2009	SP3133808520		Oxfordshire	nest	WILDCRU			NERC-S41	
<i>Harvest Mouse</i>	Micromys minutus	Nests	01/01/2007-31/12/2007	SP3134108234		Oxfordshire	nest	WILDCRU			NERC-S41	
<i>Harvest Mouse</i>	Micromys minutus	Nests	01/01/2006-31/12/2006	SP3134308229		Oxfordshire	nest	WILDCRU			NERC-S41	
<i>Harvest Mouse</i>	Micromys minutus	Nests	01/01/2009-19/03/2009	SP3134408520		Oxfordshire	nest	WILDCRU			NERC-S41	
<i>Harvest Mouse</i>	Micromys minutus	Nests	01/01/2009-19/03/2009	SP3147908539		Oxfordshire	nest	WILDCRU			NERC-S41	
<i>Brown Hare</i>	Lepus europaeus	1 Adult	06/04/1982	SP278103			field record	OBRC			NERC-S41	
<i>Brown Hare</i>	Lepus europaeus	1 Adult	04/09/1981	SP278104			field record	OBRC			NERC-S41	
<i>Brown Hare</i>	Lepus europaeus	3 Adults	12/03/1982	SP278104			field record	OBRC			NERC-S41	
<i>Brown Hare</i>	Lepus europaeus	5 Adults	20/10/1981	SP278104			field record	OBRC			NERC-S41	
<i>Brown Hare</i>	Lepus europaeus	1 Adult	04/03/1982	SP279104			field record	OBRC			NERC-S41	
<i>Brown Hare</i>	Lepus europaeus	7	05/06/1981	SP280102			field record	OBRC			NERC-S41	

Taxon Name	Common Name	Abundance / Sex / Stage	Date	Grid Ref.	Grid Ref. Qualifier	Location	Type of Record	Data Origin	European Directives	UK Legislation	NERC s41	Other Designations
Brown Hare	Lepus europaeus	2	05/06/1981	SP282103			field record	OBRC			NERC-S41	
Brown Hare	Lepus europaeus		08/02/1996	SP282103			field record	OBRC			NERC-S41	
Brown Hare	Lepus europaeus		06/02/2003	SP283103			field record	OBRC			NERC-S41	
Brown Hare	Lepus europaeus	1 Adult	26/02/1999	SP283103			field record	OBRC			NERC-S41	
Brown Hare	Lepus europaeus	2 Adults	25/10/2004	SP285102			field record	OBRC			NERC-S41	
Brown Hare	Lepus europaeus		28/04/2013	SP2865008550		Carterton	field record	MS			NERC-S41	
Brown Hare	Lepus europaeus		17/10/1995	SP289101		A40 nr Astall roundabout	dead on road	OBRC			NERC-S41	
Brown Hare	Lepus europaeus		05/04/2003	SP293099			field record	OBRC			NERC-S41	
Brown Hare	Lepus europaeus		27/03/2001	SP293099			field record	OBRC			NERC-S41	
Brown Hare	Lepus europaeus	3 Adults	24/03/2002	SP298097			field record	OBRC			NERC-S41	
Brown Hare	Lepus europaeus		09/07/1981	SP300067			field record	OBRC			NERC-S41	
Brown Hare	Lepus europaeus		20/06/1981	SP302078			field record	OBRC			NERC-S41	
Brown Hare	Lepus europaeus		24/11/2003	SP303095			field record	OBRC			NERC-S41	
Brown Hare	Lepus europaeus		24/04/2013	SP3035008450		Brize Norton	field record	MS			NERC-S41	
Brown Hare	Lepus europaeus		24/04/2013	SP3035008550		Brize Norton	field record	MS			NERC-S41	
Brown Hare	Lepus europaeus	4	13/07/1981	SP306069			field record	OBRC			NERC-S41	
Brown Hare	Lepus europaeus		20/04/2013	SP3065008750		Brize Norton	field record	MS			NERC-S41	



Taxon Name	Common Name	Abundance / Sex / Stage	Date	Grid Ref.	Grid Ref. Qualifier	Location	Type of Record	Data Origin	Invasive Status
<i>Invertebrates - Crustaceans</i>									
<i>A Crustacean</i>	Crangonyx pseudogracilis		02/11/2015	SP307057		D/S Brize Norton Stream, Highmoor Brook		EA	INNS-Other-2015

# **Status Key. Produced January 2014 by Thames Valley Environmental Records Centre**

## **EUROPEAN DIRECTIVES**

- BirdsDir-A1 - Species listed on Annex 1 of EC Directive 79/409/EEC on the Conservation of Wild Birds.
- HabDir-A2, HabDir-A4 & HabDir-A5 - Annex 2 and Annexes 4/5 respectively of the EC Habitats Directive. This is the Council Directive 92/43/EEC on the Conservation of natural habitats and of wild fauna and flora.

## **UK LEGISLATION: CONSERVATION OF HABITATS AND SPECIES REGULATIONS 2010**

This legislation translates the European Habitats Directive (see above) into UK law where species are listed in Schedule 2 and Schedule 4. Species are tagged as HabReg-Sch2 or HabReg-Sch4.

## **UK LEGISLATION: WILDLIFE AND COUNTRYSIDE ACT 1981**

### **Schedule 1 Wild Birds**

prohibits the intentional killing, injuring or taking of any wild bird and the taking, damaging or destroying of the nest (whilst being built or in use) or eggs. It prohibits possession of wild birds (dead or alive) or their eggs. In addition:

- WACA-Sch1(pt 1) – There are additional penalties for offences relating to birds on this schedule and it is also an offence to disturb such birds at the nest or with dependent young.
- WACA-Sch1(pt 2) – Covers the protection of birds which may be killed during the open season.

(Please note that some schedule 1 bird records will refer to species that do not breed in the county, e.g. over-wintering birds such as Redwing or Fieldfare. Although we include them in the annotated records, only they and their nests, eggs and dependent young enjoy extra protection under the W&C 1981 act. If you are in any doubt about the breeding status of a bird please contact us at TVERC)

### **Schedule 5 Wild Animals**

- WACA-Sch5\_sect9.1 – covers intentional killing injuring or taking (species are covered by all or some of these)
- WACA-Sch5\_sect9.2 – Covers possession or control (live or dead animal, part or derivative)
- WACA-Sch5\_sect9.4a – Covers damage to or destruction of any structure or place used by a scheduled animal for shelter or protection.
- WACA-Sch5\_sect9.4b – Covers disturbance of animal occupying such a structure or place.
- WACA-Sch5\_sect9.4c – Covers obstruction of access to any structure or place which any such animal uses for shelter or protection
- WACA-Sch5\_sect9.5a – Covers selling, offering for sale, possessing or transporting for the purpose of sale (live or dead animal, part or derivative).
- WACA-Sch5\_sect9.5b – Covers advertising for buying or selling such things.

### **Schedule 8 Wild Plants**

- WACA-Sch8 - Covers any picking, uprooting or destruction of plants listed on the Schedule. It also prohibits the sale, etc, or possession for the purpose of sale of any plants on the Schedule.

## PRIORITY NERC S.41 2006

Species listed in Section 41 of the Natural Environment and Rural Communities Act 2006 as a species of principle importance. These are very similar to the list of UKBAP and have superseded them. Species are tagged NERC S.41.

## OTHER DESIGNATIONS: RED LISTS

**Global Red List Species** (tagged GlobalRed) - Species listed by the International Union for Conservation of Nature (IUCN) in the IUCN Red List of Threatened Species. Species included are from post 1994 and post 2001 lists.

**GB Red List Species** (tagged GBRed) - Species included in national red lists. Species included are from pre 1994 and post 2001 lists. Please note not all taxon groups are currently covered, for example fungi.

Abbreviations:

**EX** – Extinct A taxon is Extinct when there is no reasonable doubt that the last individual has died.

**EW** – Extinct in the Wild. Species known to survive only in cultivation, in captivity or as a naturalised population(s) well outside the past range.

**CR** – Critically Endangered (CR) Species facing an extremely high risk of extinction in the wild in the immediate future.

**EN** – Endangered: Species that are not Critically Endangered but is facing a very high risk of extinction in the wild in the near future.

**VU** – Vulnerable: A species is Vulnerable when it is not Critically Endangered or Endangered but is facing a high risk of extinction in the wild in the medium-term future

**NT** – Near Threatened – A taxon considered to likely to become endangered in the near future.

**LR(cd)** – Lower risk (conservation dependent)

**DD** – Data deficient – A taxon with insufficient data to make an assessment of its risk of extinction.

**RE** – Regionally Extinct – Taxa that are considered extinct within the region but populations exist elsewhere in the world.

**Inde** – indeterminate – based on a pre 1994 category: Taxa which are known to be Endangered, Vulnerable or Rare but with insufficient data to place them in one of the categories.

**Insu** – Insufficiently known - based on a pre 1994 category which equates to data deficient.

Species included here are from information compiled by JNCC (The Joint Nature Conservation Committee).

## OTHER DESIGNATIONS: NATIONALLY NOTABLE SPECIES

This covers invertebrate species not falling within IUCN categories but never the less uncommon in Britain.

**Nationally Notable A** (Tagged Notable-A): Taxa which occur in <30 10 km (hectad) squares or for less well recorded groups within <7 vice counties.

**Nationally Notable B** (Tagged Notable-B): Taxa which don't fall within IUCN categories but are uncommon in Britain and occur in 31-100 10 km sq/ or for less or for less well recorded groups between 8 and 20 vice counties

**Notable** (Tagged Notable): Taxa known to be scarce (occurring in between 16 and 100 10km squares) but for which there is insufficient information to assign them to the above categories.

This designation comes from the National Biodiversity Network (NBN) species dictionary but is supported by JNCC.

#### OTHER DESIGNATIONS: NATIONALLY RARE OR SCARCE SPECIES

This designation covers species that are recognised to occur in only a few locations in Britain.

**Rare** (tagged as Status-NR) = occurring in 15 or fewer hectads (10 km squares) in the UK

**Scarce** (tagged as Status-NS) = occurring in 16 – 100 hectads in the UK.

#### OTHER DESIGNATIONS: BIRDS OF CONSERVATION CONCERN LISTS & RED LIST FUNGI

These lists were drawn up by leading governmental and non-governmental conservation organizations including the RSPB and British Trust for Ornithology. The most recent version was published in May 2009.

**Red List** (tagged Bird-Red) - species are those that are globally threatened, whose population or range has declined rapidly in recent years (i.e. by more than 50% in 25 years), or which have declined historically and not recovered.

**Amber List** (tagged Bird-Amber) - Amber list species are those whose population or range has declined moderately in recent years (by more than 25% but less than 50% in 25 years), those whose population has declined historically but recovered recently, rare breeders (fewer than 300 pairs), those with internationally important populations in the UK, those with localised populations, and those with an unfavourable conservation status in Europe.

**Red List Fungi** – This designation uses the Red Data List of Threatened British Fungi (preliminary assessment) by Shelley Evans (BMS Conservation Officer). Species are designated as:

**Fungi Red-CR** – Critically Endangered

**Fungi Red-EN** – Endangered

**Fungi Red-NT** – Near Threatened

**Fungi Red-VU** – Vulnerable

These follow current IUCN guidelines (2001) as closely as possible but with adaptations to take into account the fungal lifestyle and associated practicalities of fungal recording.

#### OTHER DESIGNATIONS: LOCAL BAP SPECIES

For any Local Authority that has drawn up a list of BAP species. Designations will only apply to species recorded from the Local Authority area.

Currently, only Bracknell Forest Council have such a BAP list and relevant records are tagged Bracknell LBAP.

## INVASIVE NON-NATIVE SPECIES

Species appearing on the Environment Agency list of non-native invasive species 2014. Species may have the following designations:

**Priority Species:** Species affecting EA interests the most

**Rapid Response Species:** Very invasive species that are not yet established

## DATA ORIGIN KEY – March 2018

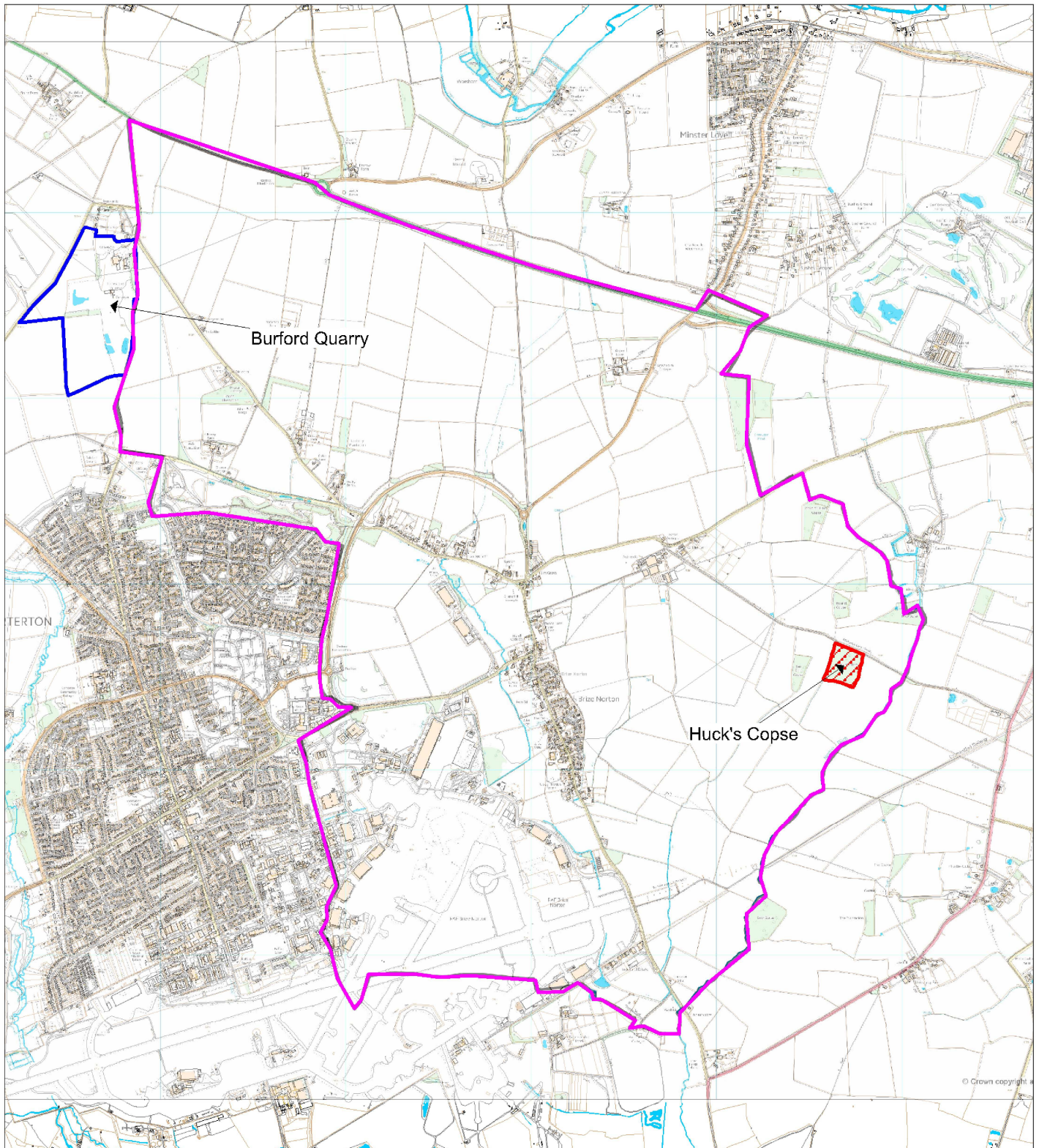
Data Origin Abbreviation	Origin Details
ABFG	Association of British Fungus Groups
AC	Academic Researcher
AN	Abingdon Natural History Society
ARC	Amphibian & Reptile Conservation
ANHSO	Ashmolean Natural History Society (& Rare Plant Group)
ARGUK	UK Amphibian & Reptile Groups
BAT	Bat Licence Returns (from licenced Bat Recorders)
BBG	Binfield Badger Group
BBOWT	Berkshire, Buckinghamshire and Oxfordshire Wildlife Trust
BC	Butterfly Conservation (includes Upper Thames and National Data)
BDS	British Dragonfly Society
BENHS	British Entomological Natural History Society
BFC	Bracknell Forest Council
BFVT	Bracknell Forest Veteran Tree Survey
BGG	Bicester Green Gym
BIG	Berkshire Invertebrate Group
BLS	British Lichen Society
BLWS	Berkshire Local Wildlife Sites Project
BMG	Berkshire Mammal Group
BOC	Berkshire Bird Clubs
BOS	Banbury Ornithological Society
BRAG	Berkshire Reptile & Amphibian Group
BRC	Biological Record Centre (Monk's Wood)
BSBBG	Berks & South Berks Bat Group
BSBI	Botanical Society of the British Isles
BTC	Banbury Town Council
BTO	British Trust for Ornithology
BUWG	Bracknell Urban Wildlife Group
BWARS	Bees Wasps & Ants Recording Society
CalRS	National Calliphoridae Recording Scheme
CBT	Childe Beale Trust
CDC	Cherwell District Council
COS	County Ornithological Services (also known as BCS)
CRPG	Cotswold Rare Plant Group
CSP	Cherwell Swift Project
EA	Environment Agency (formally the National Rivers Authority)
EC	Professional Ecological Consultant
ESB	Earthworm Society of Great Britain
ET	The Earth Trust (formally the Northmoor Trust)
FFF	Friends of Faringdon Folly



FHT	Freshwater Habitat Trust
FLC	Friends of Longcot Churchyard
FROG	Froglife
FSO	Fungus Survey of Oxfordshire
FWAG	Farmland Wildlife Advisory Group
GCN	GCN Licence Return Records
HA	Highways Agency
HWMT	Hurst Water Meadows Trust
IOSF	International Otter Survival Fund
IREC	IRECORD Website
LBRS	Longhorn Beetle Recording Scheme
LN	Local/National Expert (known to TVERC)
LWVP	Lower Windrush Valley Project
MGLG	Moor Green Lakes Group
MOD	Ministry of Defence
MOP	Member of the Public
MS	Mammal Society
NCRS	National (Trichoptera) Caddisfly Recording Scheme
NDD	National Dormouse Database
NE	Natural England/EN/NCC
NFC	Newbury Field Club
NHM	Natural History Museum
NNSS	Non-native Species Secretariat
NPD	National Ponds Database
NRG	Newbury Ringing Group
NT	National Trust
OBG	Oxfordshire Bat Group
OBRC	Oxfordshire Biological Record Centre
OBU	Oxford Brookes University
OCC	Oxfordshire County Council
OFG	Oxfordshire Flora Group
OLWS	Oxfordshire Local Wildlife Sites Project
OMG	Oxfordshire Mossing Group
OOS	Oxfordshire Ornithological Society
ORAG	Oxfordshire Reptile & Amphibian Group
OS	Otter Spotter Project
OUNHM	Oxford University Natural History Museum
OUWG	Oxford Urban Wildlife Group
OX	Oxford City Council
OxMG	Oxford Mammal Group
PC	Pond Conservation
PL	Plantlife
PT	Plant Tracker (non-native plant tracking app.)
PTES	People's Trust for Endangered Species

RBC	Reading Borough Council
RBWM	Royal Borough of Windsor & Maidenhead
RDNHS	Reading and District natural History Society
RM	Reading Museum
RRS	Riverfly Recording Scheme
RSPB	Royal Society for the Protection of Birds
RUWG	Reading Urban Wildlife Group
RWP	Reading Woodlands Plan
SARS	Soldierflies and Allies Recording Scheme
ScRS	Scarabaeoidea Recording Scheme
SepRS	Sepsidae Recording Scheme
SO	Science Oxford
SODC	South Oxfordshire District Council
SW	Shotover Wildlife
TVERC	Thames Valley Environmental Record Centre
TVFG	Thames valley Fungus Group
TW	Thames Water
U	Unknown
UKWOT	UK Wild Otter Trust
VCH	Victoria County History (historical records)
VWH	Vale of White Horse District Council
VWT	Vincent Wildlife Trust
WB	West Berkshire District Council
WBBRS	Weevil & Bark beetle Recording Scheme
WBC	Wokingham Borough Council
WFG	Wychwood Flora Group
WIA	Wildlife in Ascot Group
WILDCRU	Wildlife Conservation Research Unit
WMUWG	Windsor & Maidenhead Urban Wildlife Group
WODC	West Oxfordshire District Council
WS	Wytham Survey
WT	Woodland Trust
WWT	Wildfowl & Wetlands Trust
YE	Dick Greenaway, concerning land owned by Yattendon Estate



# Brize Norton Neighbourhood Plan area Designated Wildlife Sites



-  Local Wildlife Sites
-  Local Geological Site

Scale: 1:30000

 Search Area

## Oxfordshire Local Wildlife Site Citation

### HUCK'S COPSE

Site Code: 30D08

Grid Reference: SP317076

Area (ha): 3.2

Local Authority: West Oxfordshire

Last Survey Date(s): 11<sup>th</sup> June 2014

Designation Date: 2003

### Site Description

This small fragment of woodland retains ancient features such as the bank and ditch along the track on the north side and veteran ash stools along the east side. The canopy is dominated by oak and ash, with aspen in the southern part. Hazel coppice forms most of the shrub layer along with abundant Midland hawthorn. The ground flora has abundant dog's mercury and bluebell, as well as some greater stitchwort. The rare Solomon's seal occurs in three patches which are up to 5 metres across. Damp areas have ragged-robin and bugle. Most of the area is probably lime-rich, as suggested by the dogwood, but some slight acidity is suggested by the presence of foxglove in the western side.

SECTION 41 HABITATS OF PRINCIPAL IMPORTANCE: Lowland mixed deciduous woodland

SECTION 41 SPECIES OF PRINCIPAL IMPORTANCE: None recorded

LEGALLY PROTECTED SPECIES: Bluebell, Badger

RED DATA BOOK SPECIES: None recorded

NATIONALLY SCARCE or NOTABLE SPECIES: None recorded

### BIRDS OF CONSERVATION CONCERN:

Red list: Not recorded

Amber list: Not recorded

TYPICAL SPECIES OF LOWLAND MIXED DECIDUOUS WOODLAND: Wood-sedge, Bluebell, Solomon's-seal, Hairy-brome, Crab Apple, Bearded Couch, Wood Melick, Wood Millet, Pignut, Three-nerved Sandwort, Red Currant, Primrose, Wood Anemone, Midland Hawthorn, Wild Cherry, Field-rose, Aspen.

Daffodil has been recorded in the past, but it is not clear whether this is the wild or introduced form.

## **Citation**

NAME: Burford Quarry

SITE CODE: LGS31

GRID REF: SP277095

DATE RECORDED: 09/03/2002

DISTRICT: West Oxfordshire

RIGS STATUS: Approved 29/04/2002

PARISH COUNCIL: Burford and Brize Norton (2 parishes)

SITE TYPE: Active Quarry

REASONS FOR LISTING: Disconformity. Hardground (Trypanites trace fossils). Industrial use. Easy, safe access. Beautiful, quiet, rural location - ideal to show link between rocks, soils and landscape.

STRATIGRAPHY: Forest Marble over White Limestone, Bathonian, Middle Jurassic

# **GUIDANCE ON THE VARIOUS STATUTORY AND NON-STATUTORY WILDLIFE SITE DESIGNATIONS**

## **SITE DESIGNATIONS THAT PROTECT THE UK'S NATURAL HERITAGE THROUGH STATUTE**

### **LOCAL NATURE RESERVES (LNRs) (IN ENGLAND, SCOTLAND AND WALES)**

Under the National Parks and Access to the Countryside Act 1949 LNRs may be declared by local authorities after consultation with the relevant statutory nature conservation agency. LNRs are declared and managed for nature conservation, and provide opportunities for research and education, or simply enjoying and having contact with nature.

### **NATIONAL NATURE RESERVES (NNRS)**

NNRs contain examples of some of the most important natural and semi-natural terrestrial and coastal ecosystems in Great Britain. They are managed to conserve their habitats or to provide special opportunities for scientific study of the habitats communities and species represented within them.

NNRs are declared by the statutory country conservation agencies under the National Parks and Access to the Countryside Act 1949 and the Wildlife and Countryside Act 1981. In Northern Ireland, Nature Reserves are designated under the Amenity Lands Act (Northern Ireland) 1965.

### **RAMSAR SITES**

Ramsar sites are designated under the Convention on Wetlands of International Importance, agreed in Ramsar, Iran, in 1971. Originally intended to protect sites of importance especially as waterfowl habitat, the Convention has broadened its scope over the years to cover all aspects of wetland conservation and wise use, recognizing wetlands as ecosystems that are extremely important for biodiversity conservation in general and for the well-being of human communities. The Convention adopts a broad definition of wetland, namely "areas of marsh, fen, peatland or water, whether natural or artificial, permanent or temporary, with water that is static or flowing, fresh, brackish or salt, including areas of marine water the depth of which at low tide does not exceed six metres". Wetlands "may incorporate riparian and coastal zones adjacent to the wetlands, and islands or bodies of marine water deeper than six metres at low tide lying within the wetlands".

There is only one Ramsar site in Berkshire or Oxfordshire, South West London Waterbodies.

### **SITES OF SPECIAL SCIENTIFIC INTEREST (SSSI) (ENGLAND, SCOTLAND AND WALES)**

The SSSI series has developed since 1949 as the national suite of sites providing statutory protection for the best examples of the UK's flora, fauna, or geological or physiographical

Produced by TVERC  
September 2012



features. These sites are also used to underpin other national and international nature conservation designations. Most SSSIs are privately-owned or managed; others are owned or managed by public bodies or non-government organisations.

Originally notified under the National Parks and Access to the Countryside Act 1949, SSSIs have been renotified under the Wildlife and Countryside Act 1981. Improved provisions for the protection and management of SSSIs were introduced by the Countryside and Rights of Way Act 2000 (in England and Wales) and the Nature Conservation (Scotland) Act 2004.

## **SPECIAL AREAS OF CONSERVATION (SAC) AND SITES OF COMMUNITY IMPORTANCE (SCI)**

SACs are designated under the EC Habitats Directive. SACs are areas which have been identified as best representing the range and variety within the European Union of habitats and (non-bird) species listed on Annexes I and II to the Directive. SACs in terrestrial areas and territorial marine waters out to 12 nautical miles are designated under the Conservation (Natural Habitats, &c.) Regulations 1994 (as amended). New and/or amended Habitats sites which have been submitted to the European Commission by Government, but not yet formally adopted by the Commission, are referred to as candidate Special Areas of Conservation (cSACs). Sites which have been adopted by the EC, but not yet formally designated by governments of Member States are known as Sites of Community Importance (SCIs). In the UK, designation of SACs is devolved to the relevant administration within each country.

SACs, together with SPAs, form the Natura 2000 network.

## **SPECIAL PROTECTION AREAS (SPA)**

SPAs are classified by the UK Government under the EC Birds Directive. SPAs are areas of the most important habitat for rare (listed on Annex I to the Directive) and migratory birds within the European Union. SPAs in terrestrial areas and territorial marine waters out to 12 nautical miles are classified under the Wildlife and Countryside Act 1981.

SPAs, together with SACs, form the Natura 2000 network.

## NON-STATUTORY NATURAL HERITAGE CONSERVATION DESIGNATIONS

### LOCAL WILDLIFE SITES

Local authorities for any given area may designate certain areas as being of local conservation interest. The criteria for inclusion, and the level of protection provided, if any, may vary between areas. Most individual counties have a similar scheme, although they do vary.

Most Local Wildlife Sites systems involve a panel of ecologists and others in the development of local criteria and the selection of the sites. Panels usually include a local government ecologist, an Natural England representative, the Local Wildlife Trust, the Local Environmental Record Centre and sometimes include a representative of local landowners and local naturalists.

These sites, which may be given various titles such as 'County Wildlife Sites' (CWS), 'Local Wildlife Sites' (LWS), 'Local Nature Conservation Sites' (LNCS), 'Sites of Importance for Nature Conservation' (SINCs), or Sites of Nature Conservation Importance' (SNCIs), together with statutory designations, are defined in local plans under the Town and Country Planning system and the National Planning Policy Framework and are a material consideration when planning applications are being determined.

As part of a national standardisation process these sites have recently been renamed as Local Wildlife Sites in Oxfordshire and Berkshire. Previously they were known as County Wildlife Sites in Oxfordshire and Wildlife Heritage Sites in Berkshire. Although the use of these names, especially in citations and descriptions, is being edited and replaced with Local Wildlife Sites or LWS it is likely that some references will remain to these former names until this is complete.

### PROPOSED LOCAL WILDLIFE SITES AND EXTENSIONS

These are also included on designated sites maps. They are areas thought to include important areas of UKBAP habitat or priority or protected species populations. Extensions are likely to have similar habitats to the adjacent Local Wildlife Sites. Local Authorities are made aware of these sites. They will not have been fully surveyed and taken to the selection panel as yet.

### NGO PROPERTIES / NATURE RESERVES

A variety of non-governmental organisations such as the John Muir Trust, Plantlife, the Royal Society for the Protection of Birds, Wildlife Trusts and Woodland Trust own or manage nature reserves or other areas of land that are important for biodiversity. These sites may be intended primarily for nature conservation, or for other purposes such as protection of landscape features or the provision public access to the countryside. These areas of themselves have no statutory basis, but a large number are also designated SSSIs / NNRs / SPAs / SACs / Ramsar sites, etc.

In Berkshire and Oxfordshire, BBOWT (Berks, Bucks & Oxon Wildlife Trust), Woodland Trust and RSPB sites fall into this category.

### LOCAL GEOLOGICAL SITES (LGS)

Local Geological Sites formerly known as Regionally Important Geological and Geomorphological Sites (RIGS) are the most important places for geology and geomorphology outside statutorily protected land such as Sites of Special Scientific Interest (SSSI). As part of a national

standardisation process these sites have recently been renamed as Local Geological Sites in Oxfordshire and Berkshire. Sites are selected under locally-developed criteria, according to their value for education, scientific study, historical significance or aesthetic qualities. Whilst not benefiting from statutory protection, LGS are equivalent to Local Wildlife Sites, and "*...consideration of their importance becomes integral to the planning process*".

## OTHER SITES

Occasionally other sites might be shown on maps. These are likely to be sites with some wildlife interest, usually managed by local groups, local authorities or town councils but which do not have a specific statutory or non-statutory designation.

Some local authorities within Oxfordshire and Berkshire have identified other sites which are protected through policies in their local plans, including Oxford Local Wildlife Sites in Oxford City and district wildlife sites in Cherwell.

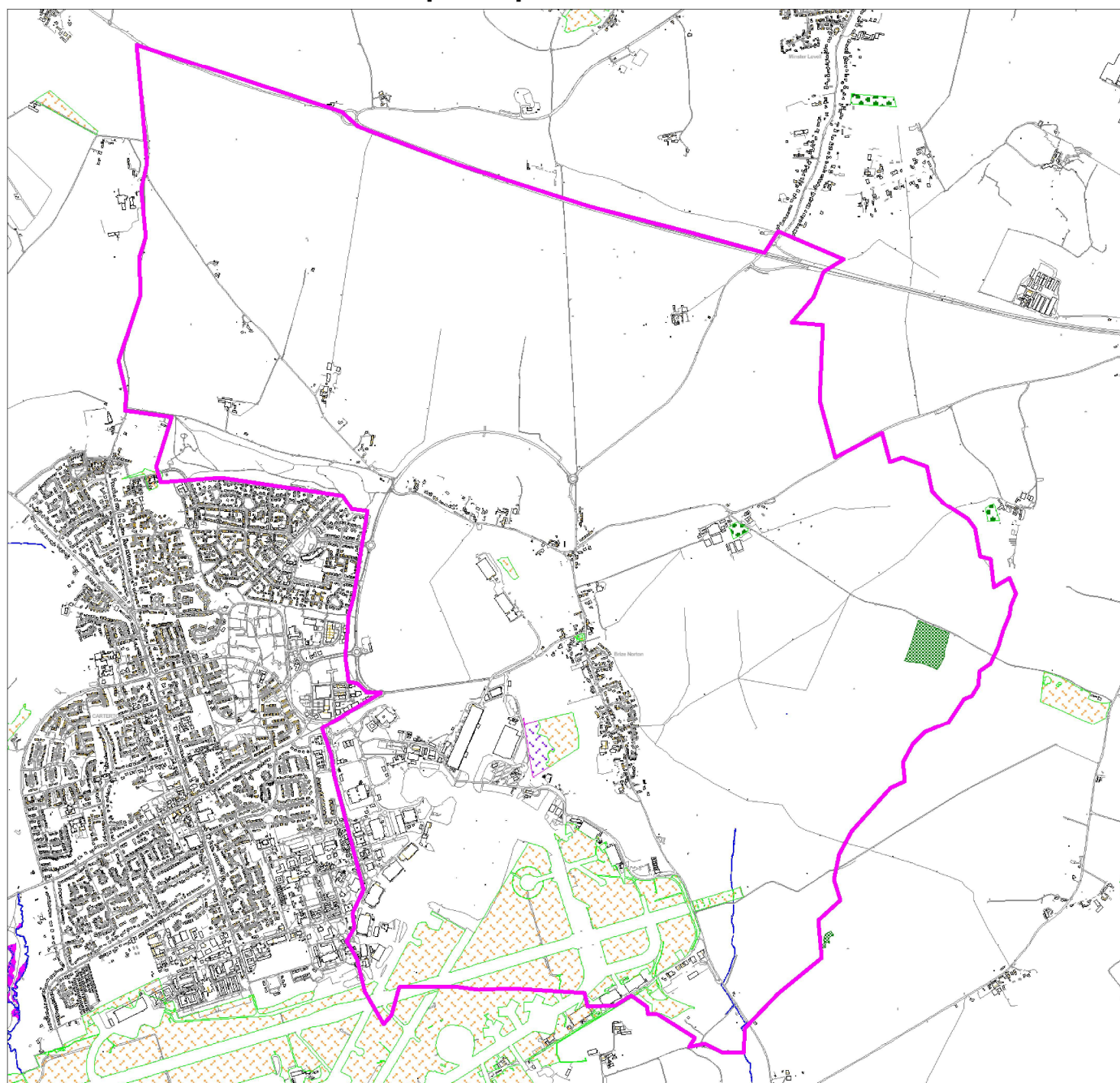
## CONSERVATION TARGET AREAS/ BIODIVERSITY OPPORTUNITY AREAS






These landscape scale areas have been identified as supporting high concentrations of UKBAP habitats and species populations and the potential to restore habitats at a landscape scale. These areas act as a focus for targeting resources into habitat management and restoration.

## ANCIENT WOODLAND

Ancient woodland areas within Bracknell Forest and Wokingham Borough are from an updated layer of ancient woodland produced by TVERC for Bracknell Forest Council and Wokingham Borough Council in 2015-16. This data has been provided to Natural England but has not yet been made available and thus differs from that shown on the Magic Map Interactive Map. For information of the methodology for selecting ancient woodland areas please contact TVERC.

# Brize Norton Neighbourhood Plan area Section 41 Habitats of Principal Importance



- |   |                                     |   |                      |
|---|-------------------------------------|---|----------------------|
|  | Lowland mixed deciduous woodland    |  | Rivers               |
|  | Possible priority fen habitat       |  | Traditional orchards |
|  | Possible priority grassland habitat |   |                      |

Scale: 1:30000

 Search area

Map produced by Thames Valley Environmental Records Centre in 2018  
© Crown Copyright. All rights reserved  
Oxfordshire County Council Licence No 100023343 (2018)  
FOR REFERENCE PURPOSES ONLY, NO FURTHER COPIES MAY BE MADE



List of Habitats

Habitat	Total Area (Ha)
Lowland mixed deciduous woodland	3.22
Possible priority fen habitat	2.21
Possible priority grassland habitat	59.53
Rivers	N/A
Traditional Orchards	0.44

List of Habitats

Habitat	Total Area (Ha)
Lowland mixed deciduous woodland	3.22
Possible priority fen habitat	2.21
Possible priority grassland habitat	59.53
Rivers	N/A
Traditional Orchards	0.44

## DATA OVERVIEW

The habitat data provided is extracted from the latest GIS layers of habitats produced by Thames Valley Environmental Records Centre. These datasets are named: Berkshire Habitat and Land Use, Oxfordshire Habitat and Land Use.

## DATASET DESCRIPTION

The data maps NERC Act Section 41 habitats of principal importance (previously UKBAP priority habitats) and Phase 1 habitat classification habitats. Data provided will map either just habitats of principal importance or both depending on the request.

## DATA ORIGIN

Data has been mapped using a combination of survey data, when available, and aerial photograph interpretation.

## DATA COVERAGE

- Berkshire: nearly the whole County has been mapped besides a few gaps. Most of the mapping took place between 2004-2006. Some updates have taken place especially to map habitats of principal importance and Local Wildlife Sites as well as a complete update to Bracknell Forest in 2010.
- Oxfordshire: most of the county has been mapped. Before 2016 there were major gaps although Cherwell District, designated sites, Conservation target Areas, traditional orchards and coastal and floodplain grazing marsh had been largely mapped. In 2016-2017 mapping of the remaining areas has been undertaken. By early 2017 the gaps had been significantly reduced. The main habitats of principal importance that are missing are the woodland habitats. Mapping is currently proceeding to complete as much of this mapping as possible.

Some recent survey data may not have been incorporated.

## DATA ACCURACY

Habitat mapping started by using Ordnance Survey landline digital data to map boundaries along with aerial photographs. Since 2006 data is mapped to Ordnance Survey Mastermap polygon boundaries where applicable. This data will be more accurate although may not absolutely precisely reflect the latest version of Mastermap as it is not possible to remap all data to that version.

Depending on the data available and its age habitat polygons are mapped with the following interpretation quality:

- Definitely is this habitat
- Habitat is in polygon, but not accurately mappable
- Habitat probably in polygon, but not accurately mappable
- Not present but close to definition (this is rarely used)
- Probably is, but some uncertainty

While it is not possible to distinguish these on the maps, if further clarification of any particular polygon is required please contact TVERC.